

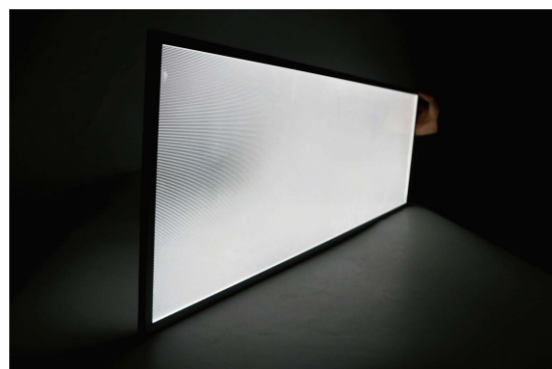
DOUBLE SIDE LED BACK LIT PANEL

•DBLP•



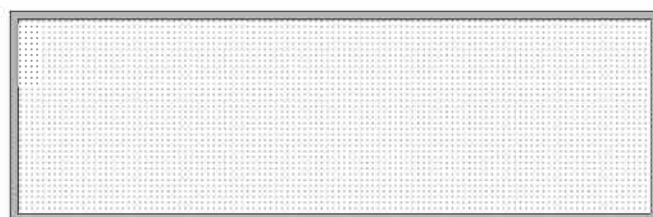
Features

- The design is double side lited but only in 9mm thickness
- The back lit panel are used with OSRAM led as light source and Mitsubishi PMMA as LGP witch insure the high quality of light output upto 90lm/w, average 3000lx on surface .
- It is ideal for any signage or high end shelving which need light from both side
- Less weight but better light
- With or without diffuser is optional
- 4 sides with frame to strengthen the panel



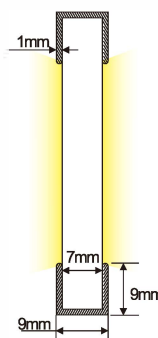
Specification

- Voltage . : 12V/24VDC
- Operating Temperature : 0-45
- Light span : 50000hrs/70%
- Available : 2700-6500K / RGB/ WW+CW
- CRI : >80
- Lumen : 80-90lm/w
- IP20
- Max size : 1000 x 1000mm
- Customize size are welcome

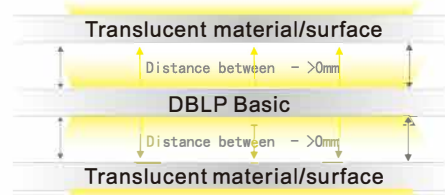


Aluminum frames

Frame color : silver , black or white is available on request

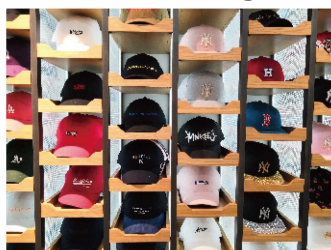


Usage illustration



Application

Double side shelving



Signage

